



WATCH VIDEO



K1080-F1

Laser Cutter And Engraver With
Honeycomb Table

INTRODUCTION

KASU Laser's laser cutter and engraver K1080-F1 with honeycomb table can cut and engrave on non-metal materials like fabrics, leather, acrylic, plastic, wood, plywood, paper, etc. with super high precision and speed.

The beauty of Co2 laser cutting is that it is incredibly versatile with suitable for different types of materials. And the K1080-F1 High Precision Laser Cutter And Engraver is one of the most popular Co2 laser cutting machine models.

Effective Working Area:

1000*800MM

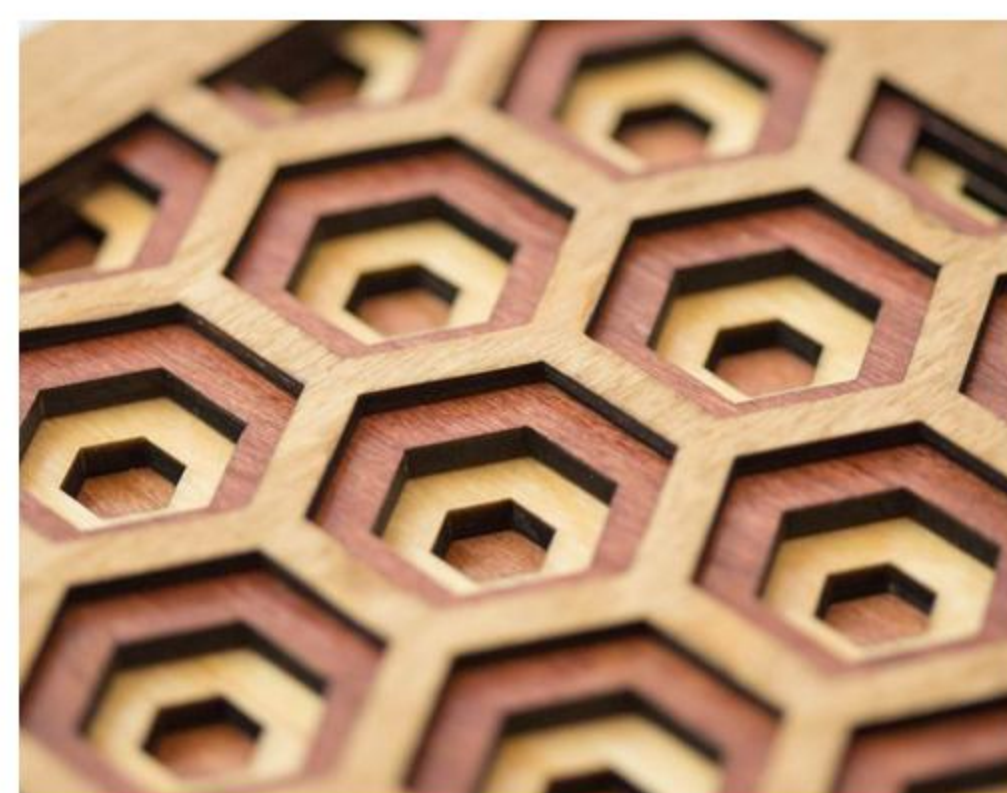
Machine Size: 1610*1390*1120MM

It has been widely applied in labels and applique, advertising and signage, art and craft, toy and decorations, etc. Super low initial investment and low maintenance cost make it ideal for individual startups and industrial applications.

APPLICATIONS



Acrylic



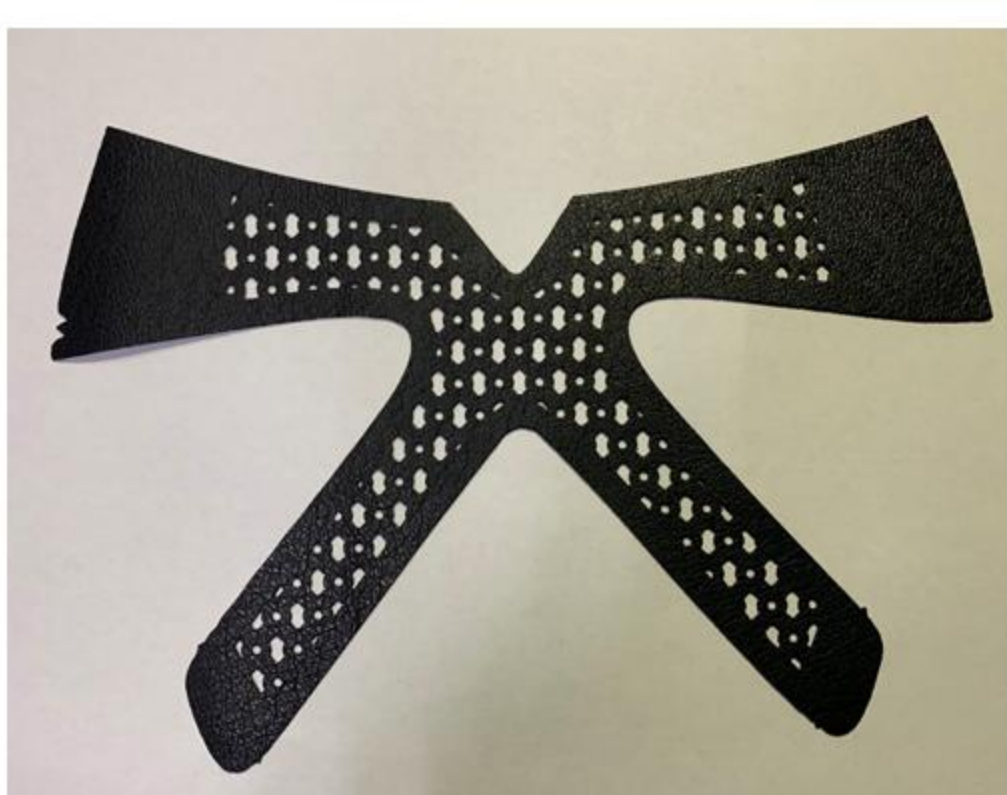
Wood



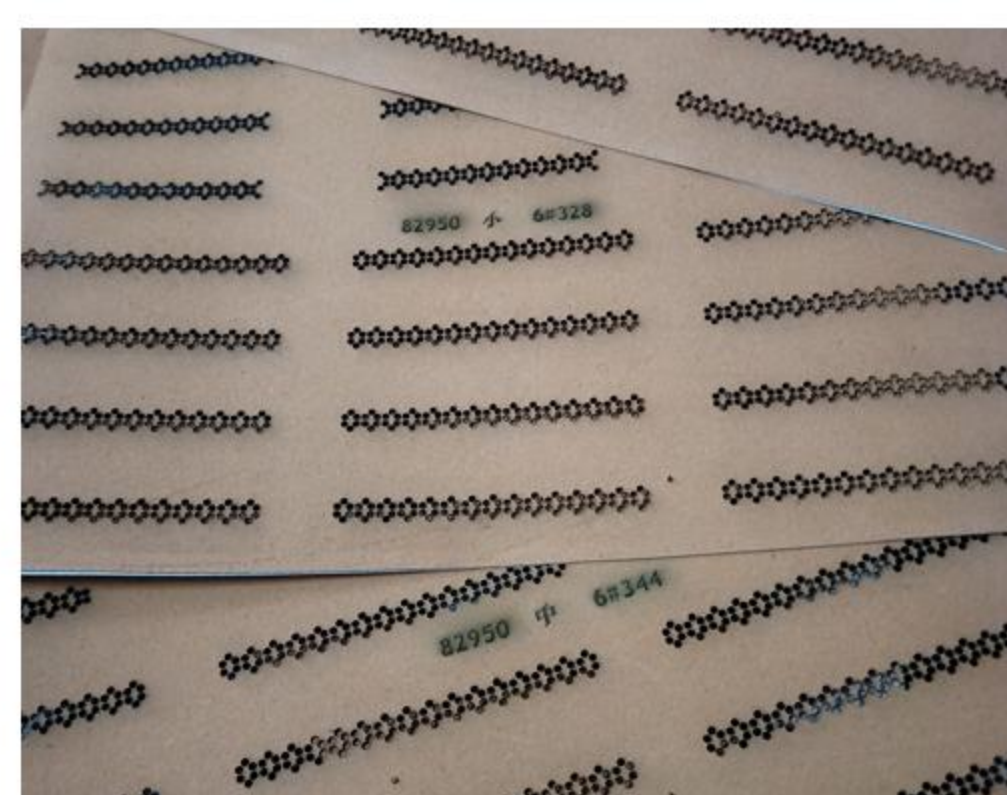
Plywood



Plastic



PU Leather



Cardboard

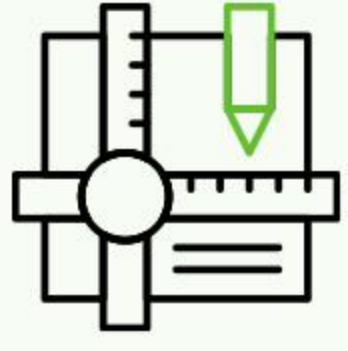


Paper

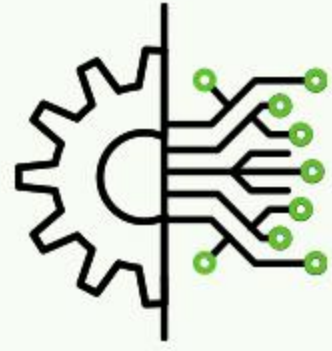


Fabric

■ KEY FEATURES



High Accuracy and Precision Cuts



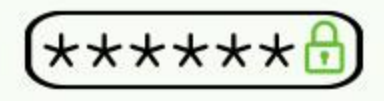
Powerful Control Software Meet Different Industry Needs



Multi Laser Functions



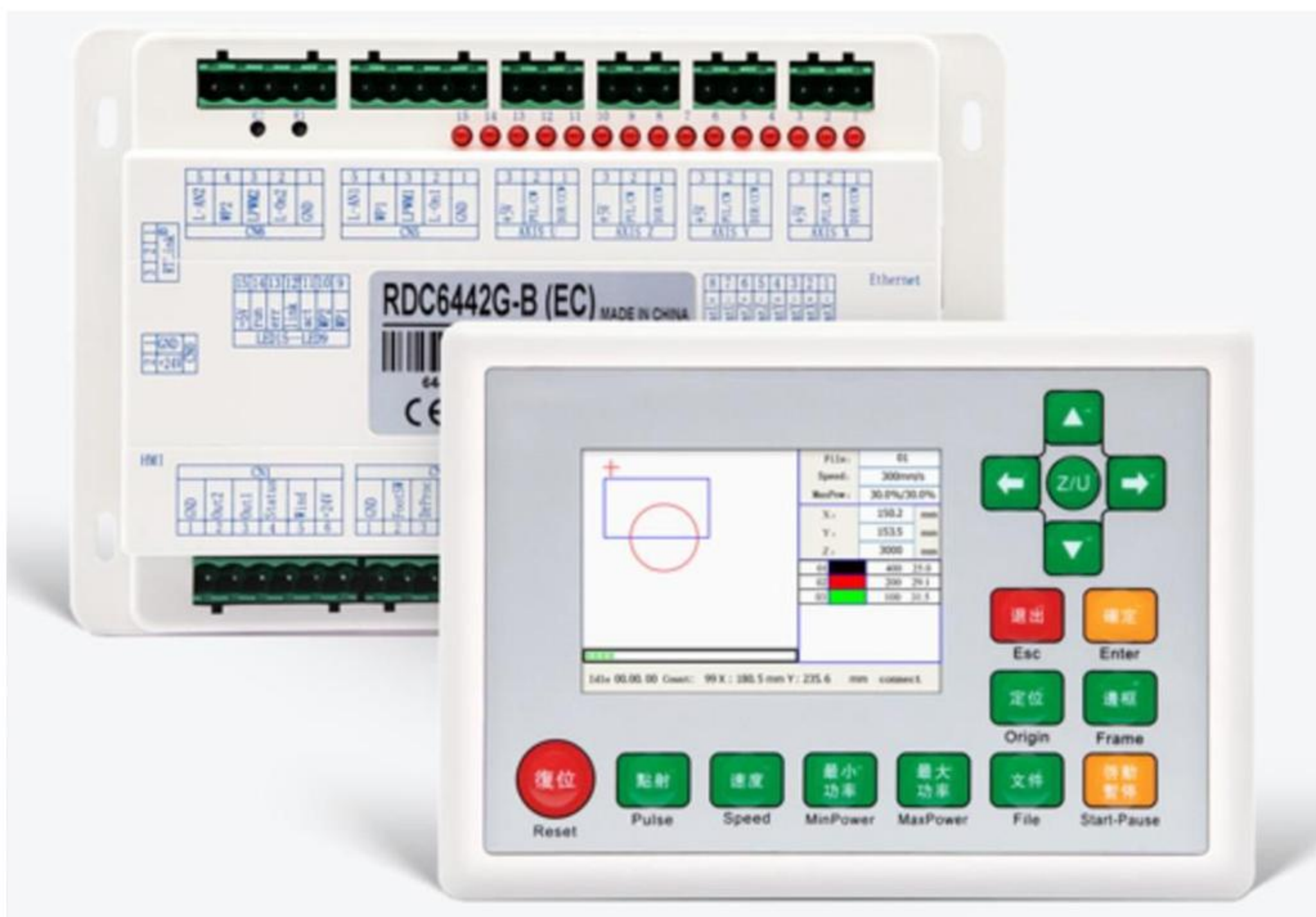
Computer-Aided Manufacturing



Low Initial Machine Investment

■ Smart Laser Control Software

While using KASU K1080-F1 laser cutter, only CAD design files are necessary, and you can design at your wish. The smart laser control software can make the whole cutting and engraving process highly automatic.



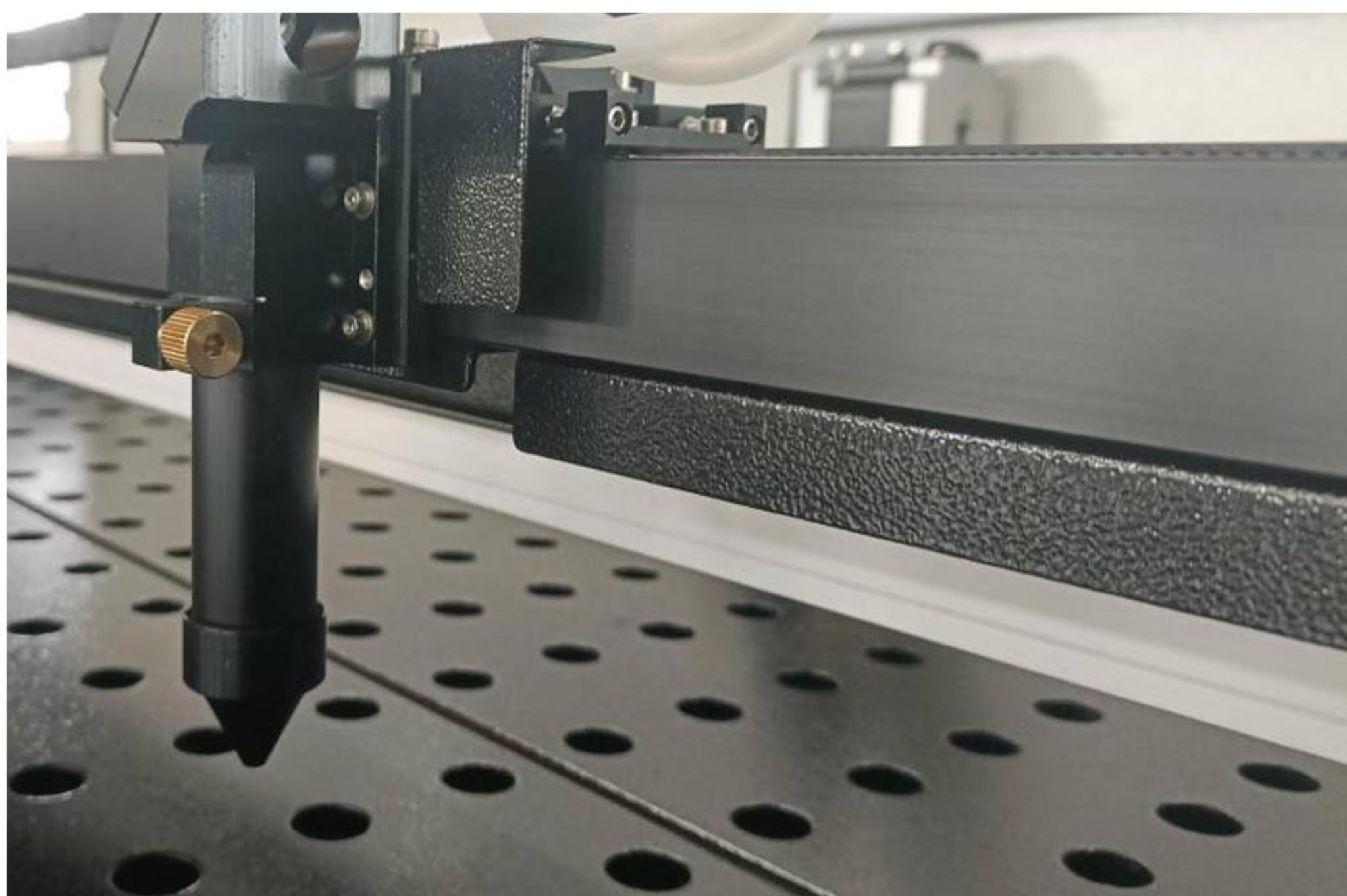
■ Sealed Glass Co2 Laser Tube



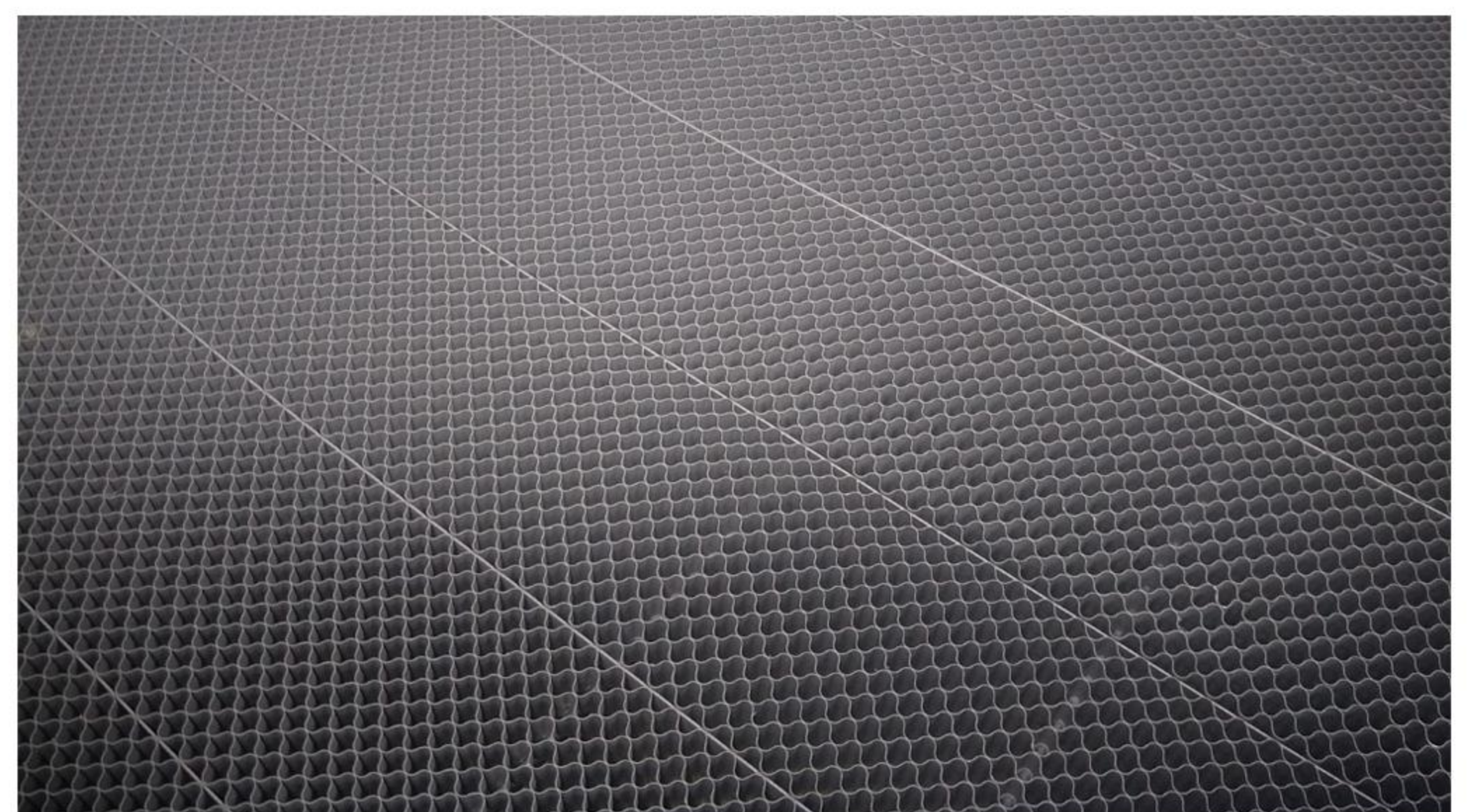
Sealed glass Co2 laser tube is one of the consumables for Co2 laser cutting machine. But the Made-In-China Co2 glass tube's ROI is super high. One 100W laser tube can last for over 2 years based on 8 working hours per day. And you only need to pay about hundreds of US Dollars to replace one.

■ Reinforced Hardware Module

The laser cutter lasts longer since there is no mechanical friction that could lead to wear and tear. KASU laser's reinforced hardware module make our cutter achieve an impressive level of precision. This level of accuracy is as high as +/- 0.1mm, which is one of the best you'll get from laser cutting.

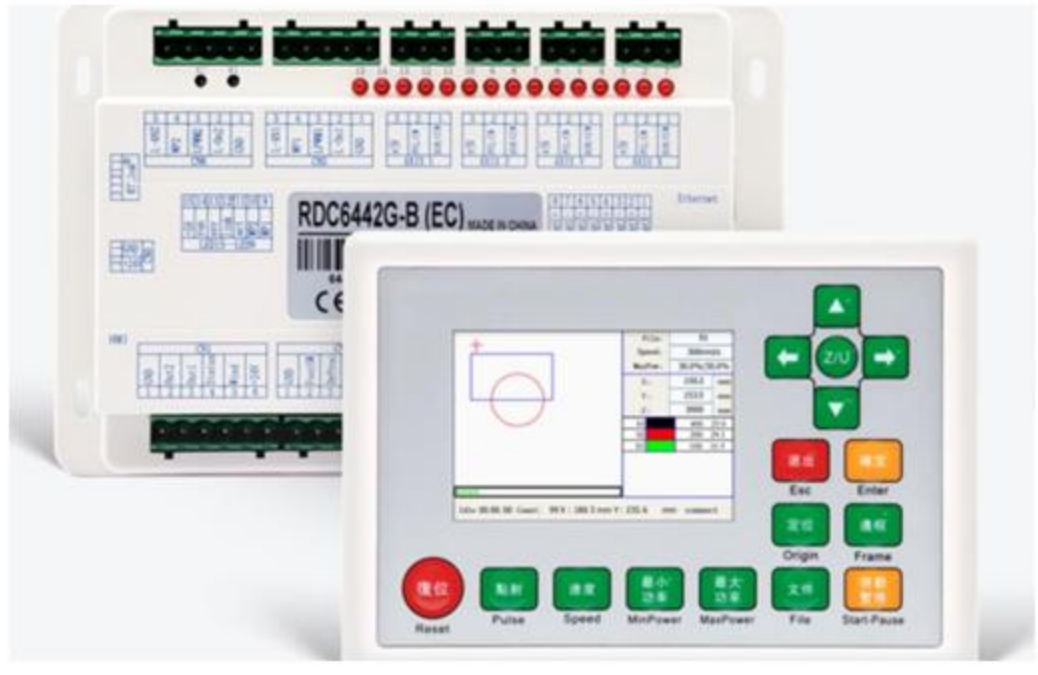


■ Strong Honeycomb Table

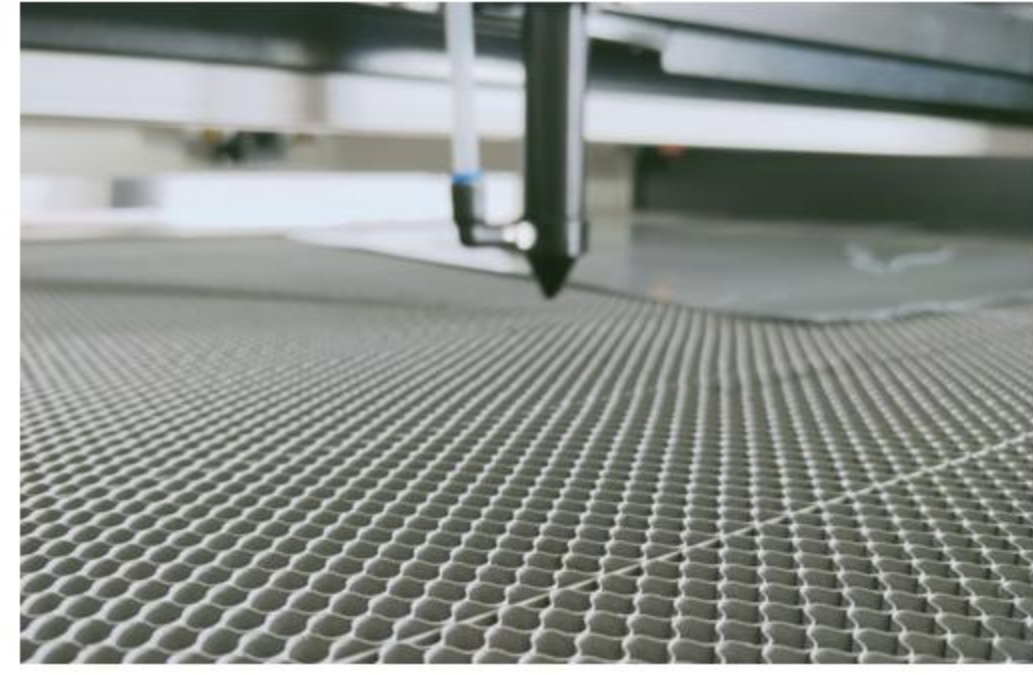


We are using the reinforced galvanized iron honeycomb platform to offer you strongest support for both soft and plate materials. Standard bore diameter is 9.5mm and you can also select 7.5mm for your different applications.

TOP QUALITY SPARE PARTS



Control Card



Cutting Head



Glass Tube



Laser Power



AC Water Chiller



Exhausting Fan



Air Pump



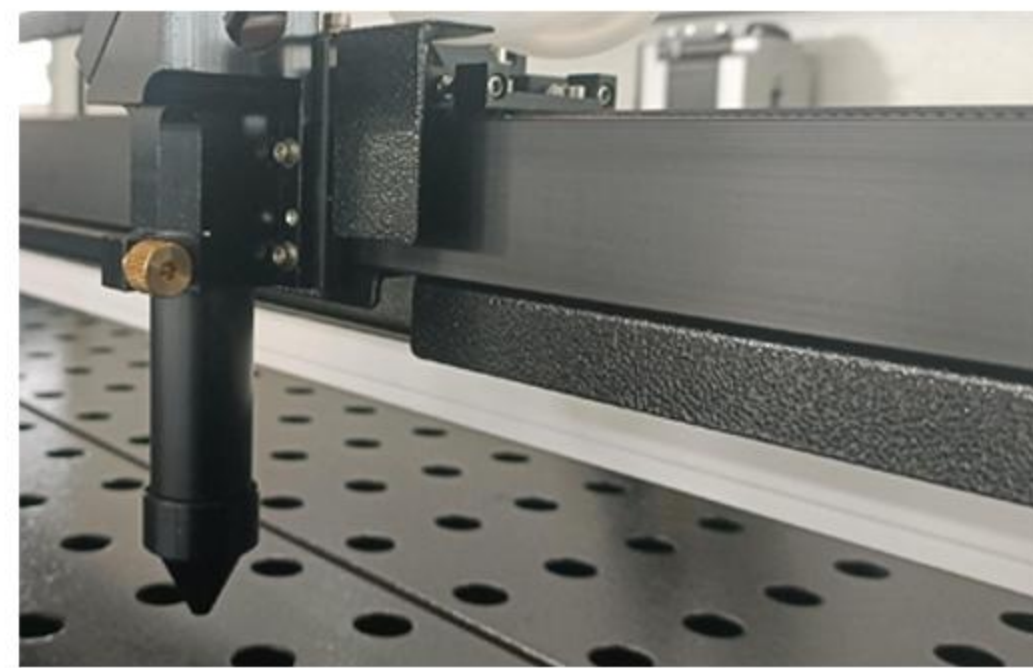
Lense



Stainless Steel Screw



Stepping Motor



Guide Rail



Spare Parts Tool Kit

To keep your laser cutter running for years, we provide you high quality spare parts verified by our QC process. And we offer replacing spare parts to our clients at COST PRICE just to ensure you have the best using experience and lowest maintenance cost.

SAFETY DESIGN

Following the safety standards, we try everything to make a reliable machine to protect both your operator and your laser machine.



All-Round Safe Cover



Alarm Lamp



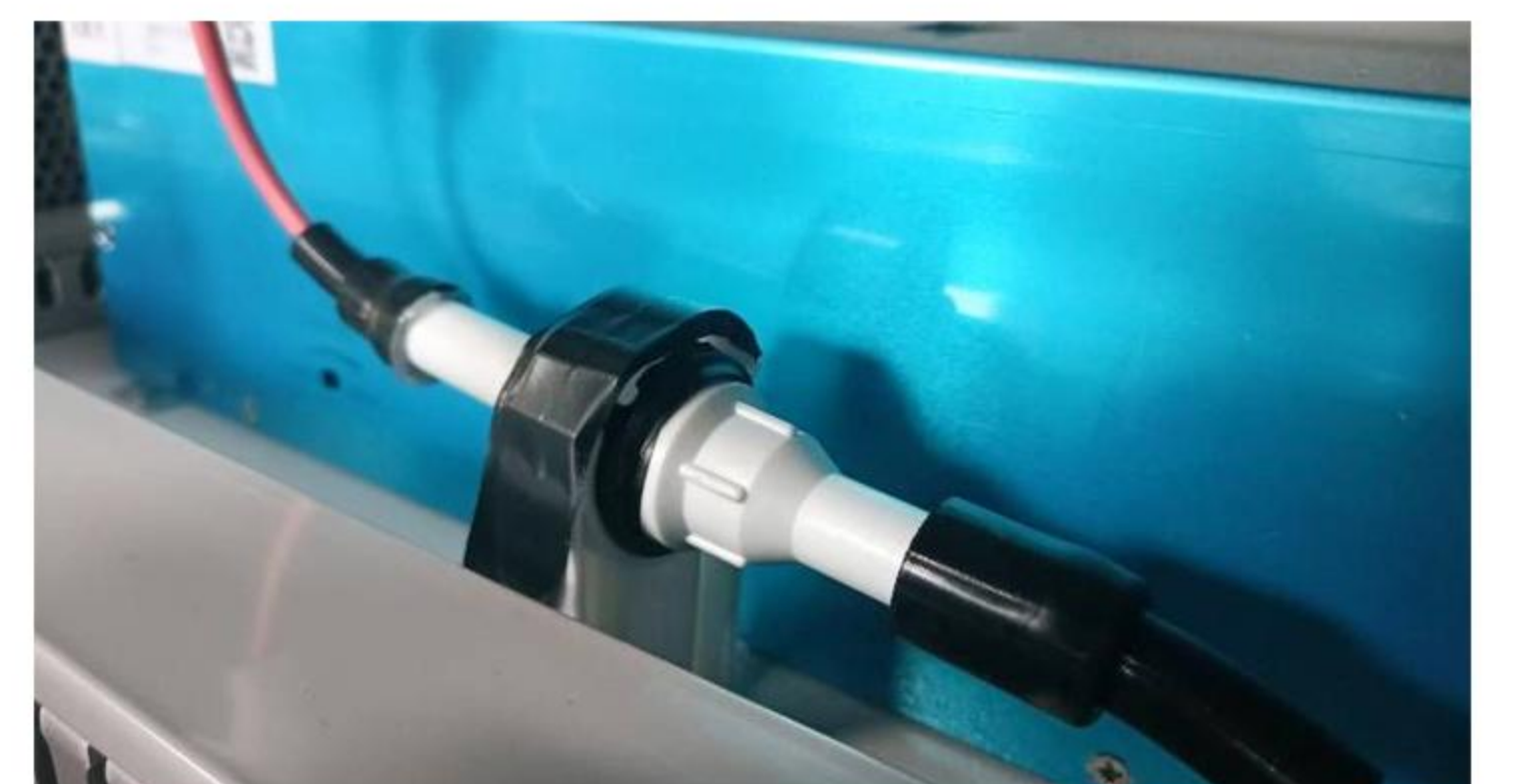
Emergency Button



Switch Built-in Design



High-Voltage Wire Insulation



Insulation Support Frame



Notification Stickers



Wire Protection

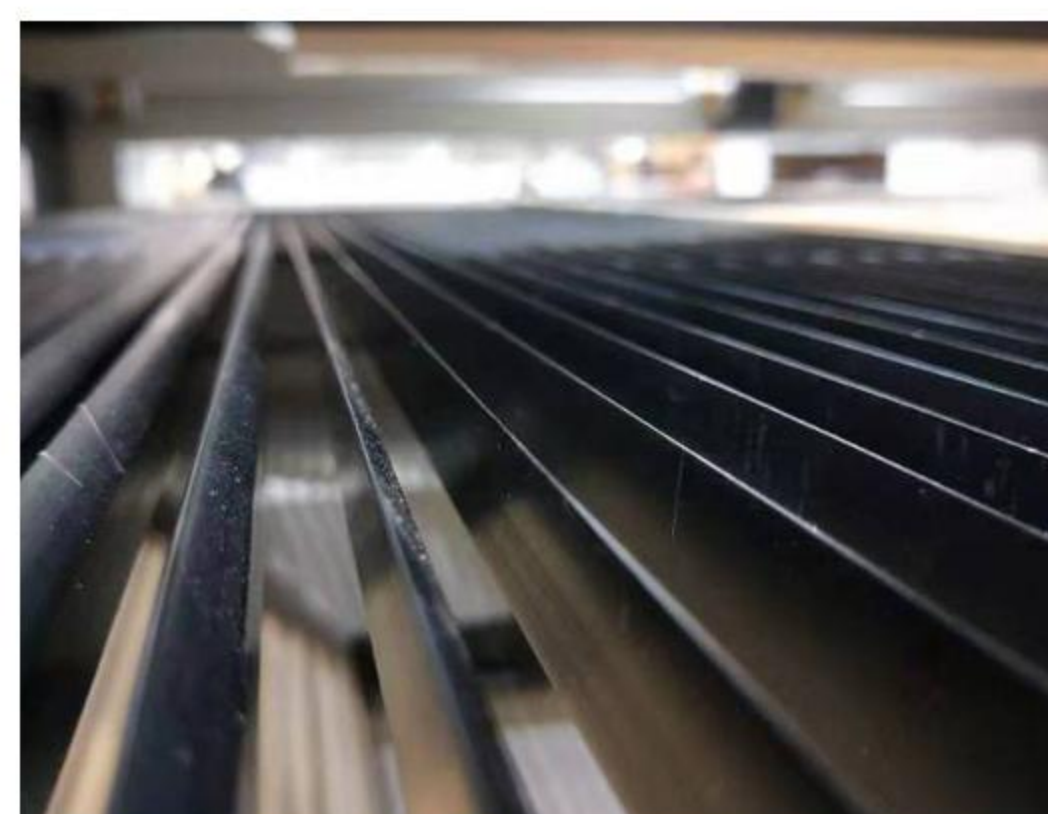


Connector Insulation

OPTIONAL DEVICES



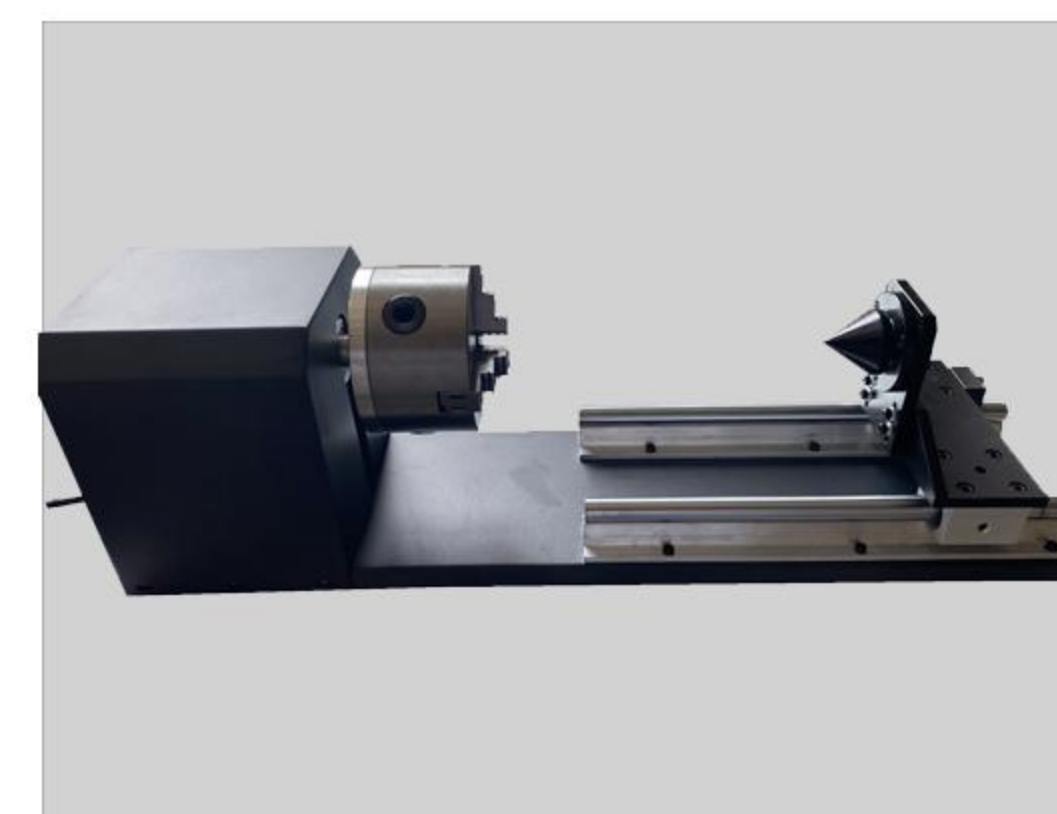
Multi Heads



Blade Knife Table



Up and Down Table



Rotary Device

MACHINE PARAMETERS

Working Area	1000MM*800MM	Software	KASU
Laser Type	Glass CO2 Laser Tube	Working Speed	<1000 MM/S
Laser Power	80/100/130/150W/200W	Power Supply Requirements	AC220V±5% 50Hz/60Hz 1Phase
Heads of Laser	Single Head	Format Supported	AI\BMP\PLT\DXF\DST
Dimensions with Wood Package	1.7*1.67*1.32M	Positioning Accuracy	±0.1MM
Gross Weight	480KG	Operating Temperature	minus 10°C~45°C
Motion System	Hybrid Step-Servo Motor	Operating Humidity	5-95%
Cooling System	5000 Industrial Water Chiller	Total Power	<1.5KW (Excluding exhauster)

SUCCESSFUL STORIES



CONTACT US



WECHAT



WHATSAPP

Contact us now and get a live demo of how our digital cutting solutions help increase your cutting workshop productivity and efficiency.

✉ Email: kasu@kasulaser.com
 🌐 www.kasulaser.com / www.kasucutter.com
 🏢 Shanghai KASU Intelligent Technology Co., Ltd.

🏠 Suzhou KASU Intelligent Equipment Co., Ltd.
 📍 Factory: No. 20, Jiangnan Road, Taicang, Suzhou, Jiangsu, China