



SHANGHAI KASU INTELLIGENT TECHNOLOGY CO., LTD.
SUZHOU KASU INTELLIGENT EQUIPMENT CO., LTD.



GLOBAL SERVICE NETWORK

EGYPT	PHILIPPINES	BRAZIL	BULGARIA	UZBEKISTAN
MOROCCO	INDONESIA	COLOMBIA	INDIA	CONGO
USA	MALAYSIA	PERU	BANGLADESH	CZECH REPUBLIC
CANADA	SINGAPORE	VENEZUELA	PAKISTAN	POLAND
MEXICO	RUSSIA	CHILE	AFHANISTAN	GERMANY
AUSTRALIA	UKRAINE	ARGENTINA	SRI LANKA	THAILAND
FRENCH POLYNESIA	LATVIA	SPAIN	UK	SOUTH AFRICA
NEW ZELAND	DOMINICAN REPUBLIC	PORTUGAL	IRAN	GEREECE
VIETNAM	FIJI	ITALY	IRAQ	JORDAN



FACTORY ADDRESS:
NO. 20, JIANGNAN ROAD, TAICANG, SUZHOU, JIANGSU, CHINA (POSTCODE: 215400)



TEL:
86-18601718317



FAX:
86-21-3332 1034



E-mail:
KASU@KASULASER.COM



WEB:
HTTP://WWW.KASULASER.COM
HTTP://WWW.KASUCUTTER.COM

**Scan me to get
more information**



WHATSAPP



WECHAT



KASU LASER

PROFESSIONAL LASER CUTTER & SOFTWARE SUPPLIER



SHANGHAI KASU INTELLIGENT TECHNOLOGY CO., LTD.
SUZHOU KASU INTELLIGENT EQUIPMENT CO., LTD.



非味激光
KASU LASER



KASU LASER

TECHNOLOGY TO LEAD THE MARKET
SERVICE TO WIN THE REPUTATION



COMPANY INTRODUCTION

Shanghai KASU Intelligent Technology Co., Ltd. was established in 2009, is a professional state-level high-tech enterprise who specializes in the research and development, production and sales of laser equipment and software.

Our company owns 5000 square meters of modern factory, 30 sets of precision machinery, processing equipment and more than 200 professional skills of highly qualified staff, more than 40 people who have master's degree diploma or above senior R&D personnel. Since the establishment of our company, a number of products obtain invention patents, utility model patents, software copyrights and other intellectual property rights, the

European CE certification and the United States FDA certification. Our company has after-sales service centers in professional markets.

Shanghai KASU Intelligent Technology Co., Ltd. has always been adhering to the business philosophy of "Technology To Lead The Market, Service To Win The Reputation", and revitalize the Chinese nation's laser industry. We look forward to joining hands with you to create a better future.

CREATIVITY



VITALITY



PROSPERITY



HONOR



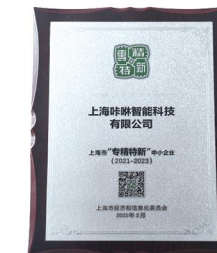
CHINESE HIGH-TECH ENTERPRISE



SHANGHAI SOFTWARE ENTERPRISE



INVENTION PATENTS



CERTIFICATE OF SPECIALIZATION



PRODUCT CONTENTS

KASU LINGERIE LACE LASER CUTTING MACHINE 06

KASU DUAL-BEAM LARGE VISION CAMERA LASER CUTTING MACHINE 08

KASU FLAGSHIP DUAL-BEAM LARGE VISION CAMERA LASER CUTTING MACHINE 09

KASU LARGE VISION LASER CUTTER 10

KASU HIGH PRECISION LASER CUTTER 12

KASU LASER CUTTER WITH PROJECTOR 13

KASU LASER CUTTER WITH CONVEYOR 14

KASU SMALL VISION LASER CUTTER 16

KASU LASER ENGRAVING & CUTTING MACHINE 17

KASU FLATBED LASER CUTTER WITH CONVEYOR 18

KASU LASER CUTTING MACHINE 19

KASU MATERIAL CALCULATING SOFTWARE
KASU LASER CUTTER 20

KASU HOT IRON CUTTER 22

KASU UV LASER MARKING MACHINE 24

KASU FIBER LASER MARKING MACHINE 26

KASU FIBER LASER MARKING MACHINE 27

KASU HANDHELD LASER WELDING MACHINE 28

KASU CO2 GALVO GANTRY INTEGRATED LASER CUTTING MACHINE 30

Disclaimer: The final interpretation of the brochure belongs to Shanghai KASU Intelligent Technology Co., Ltd. The company does not assume any responsibility for possible errors in printing. We reserve the right to change the design of our products. The brochure is subject to change without notice.

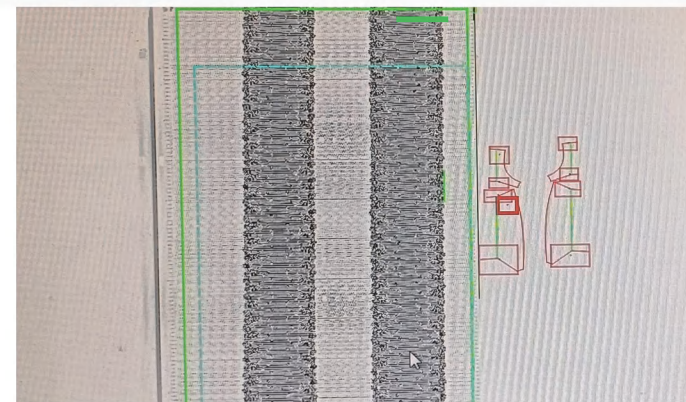
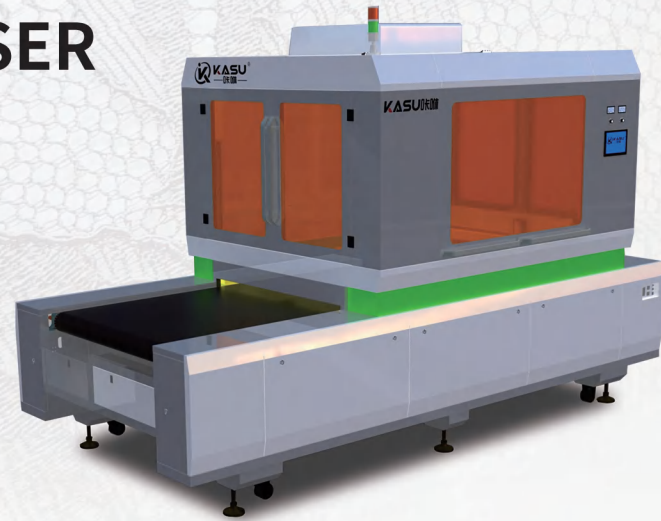
KASU LINGERIE LACE LASER CUTTING MACHINE

The special laser cutter independently developed by KASU LASER is mainly used in the automatic continuous, multiple template and cutting of lingerie lace, knitted yarn and other high-precision automatic positioning cutting.

The whole machine is equipped with a fully enclosed large-sided panoramic camera positioning system to realize the automatic cutting

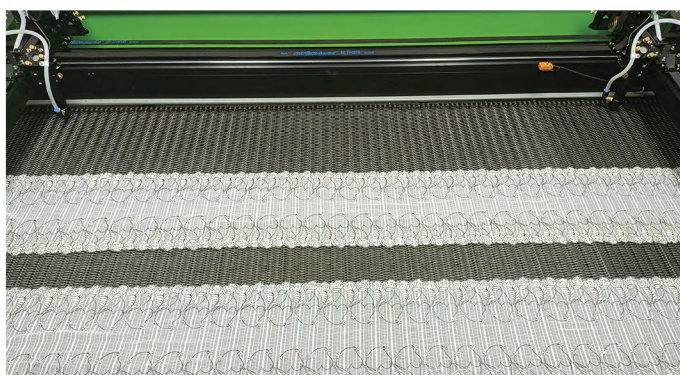
mode of double automatic material delivery, automatic graphic detection and automatic positioning of lace fabric.

The whole machine adopts the cutting mode of the dual-beam synchronous motion system, combined with the independently developed motion control software and the servo motor system, and supports the symmetrical graphics of the two laser heads in cutting lace at the same time, and reasonably distributes the processing path of the two laser heads, greatly improving the production efficiency.



CORE ADVANTAGES

- HIGH-PRECISION LOW-WAVE POINT TEMPLATE MATCHING
- DUAL-LACE SYNCHRONIZATION TEMPLATE MATCHING
- MULTI-PATTERN TEMPLATE MATCHING
- DEFORMATION TEMPLATE MATCHING OF ELASTIC LACE
- SIMPLE TO OPERATE AND LOW REQUIREMENTS FOR OPERATORS



VISION SOFTWARE

- SPECIALLY DESIGNED FOR LINGERIE RAW MATERIALS
- FULLY ENCLOSED SAFETY PROTECTION SYSTEM
- DUAL-LACE MATERIAL AUTOMATIC FEEDING SYSTEM
- EXTENDED PICK-UP PLATFORM
- INTEGRATED ELECTRICAL CIRCUIT DESIGN
- AUTOMATIC CIRCULATING FEEDING, DETECTION AND CUTTING
- SIMPLE OPERATION AND STABLE PERFORMANCE

CUTTING EDGE



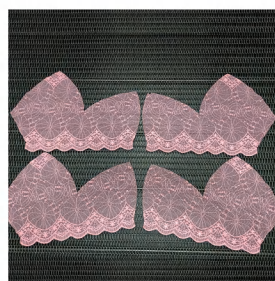
Small wave pattern error



Non-contact cutting with accurate cutting size



Hot sealed edge cutting

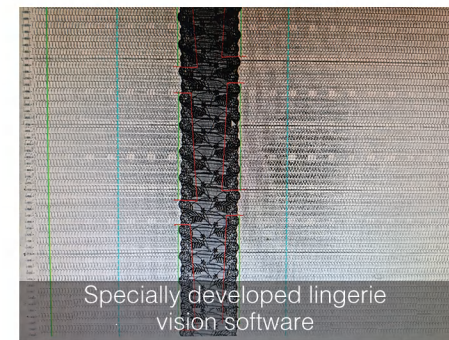


Smooth cut and in any shape



Clean and no yellow edges

KEY FEATURES



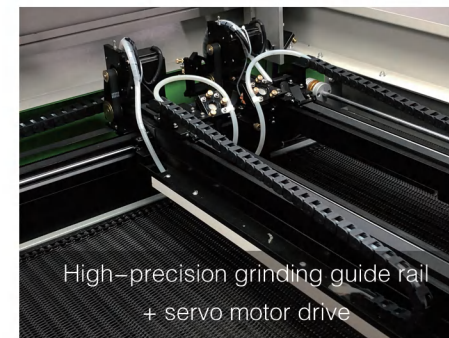
Specially developed lingerie vision software



2400W pixel panoramic HD camera



Safety protection doors on both sides



High-precision grinding guide rail + servo motor drive



Automatic feeding structure + pick-up platform



Special touch screen operation panel



Manual Saving

Highly automated, saving at least 5 workers per machine



Material Saving

No trim tolerance is required helps saving the material by over 5%



Energy Saving

Significantly reduce the difficulty of the onward sewing job



Money Saving

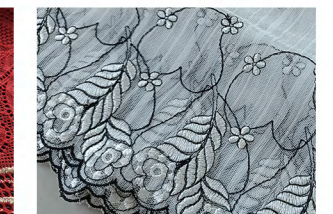
Greatly reduces the difficulty of recruiting workers

PARAMETERS

MACHINE MODEL: KD9014-SY
 CAMERA RANGE: 900MM*1400MM
 CAMERA PIXELS: 2400 W
 LASER POWER (W): 130W CO2 LASER TUBE
 MACHINE SIZE (MM): 1600 * 3700 * 2100
 FEEDER SIZE (MM): 1160*1180*850
 NET WEIGHT: 900KG
 CUTTING SPEED: 600MM/S

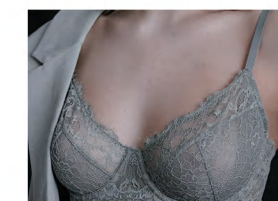
DEFORMATION ERROR: <3MM
 REPEAT ACCURACY: ± 0.1MM
 COOLING MODE: WATER CHILLER
 WORKING POWER SUPPLY: AC220V ± 5% / 50-60HZ
 WORKING ENVIRONMENT: TEMPERATURE: 5-30°C
 HUMIDITY: 5%-80% UNEXPOSED
 SUPPORTED GRAPHIC FORMAT: AI, PLT, DXF, DST, BMP, DWG, ETC.

APPLICABLE LACE

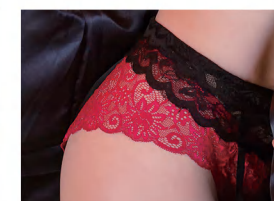


INDUSTRY APPLICATION

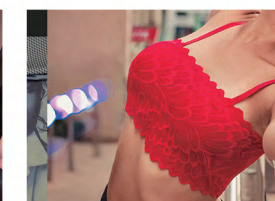
It is mainly used for rapid cutting of various flexible lace fabrics.



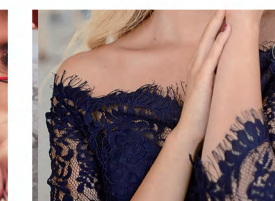
Floral Brassiere



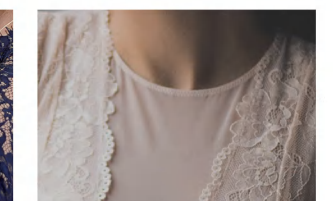
Underwear



Red Bra



Decorative Dress



Decorative Apparel

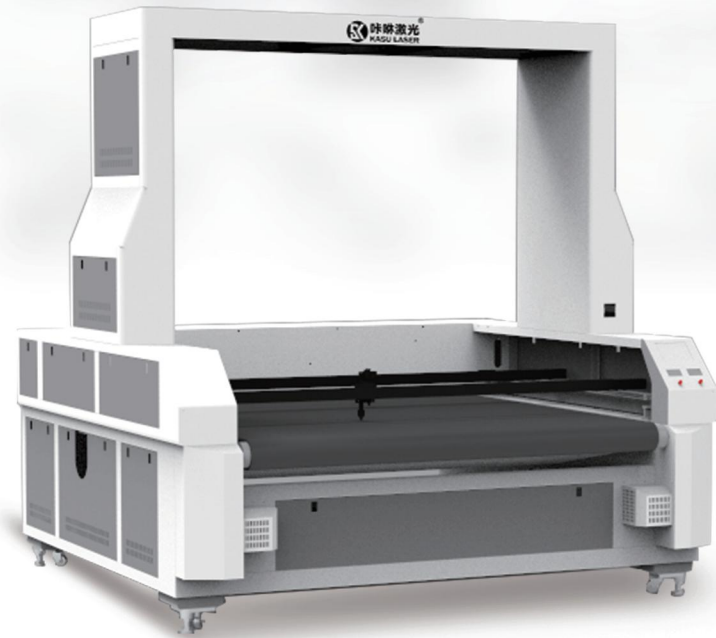
KASU DUAL-BEAM LARGE VISION CAMERA LASER CUTTING MACHINE



Cutting efficiency doubled ,
save more labor cost



Support more typesetting method ,
save more material



High accuracy cutting for
material beyond format

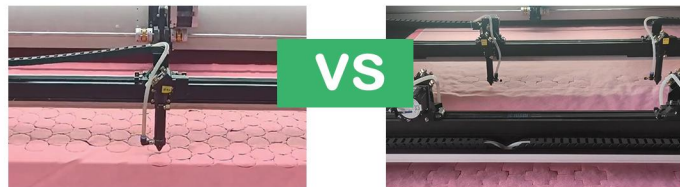


Applied in more industries ,
meet multi-needs

PARAMETERS

MODEL	DETECTING AREA	NET WEIGHT	DIMENSION
KD1012-SY2	1000*1100	600KG	1610*2200*2250
KD1614-SY2	1600*1200	800KG	2230*2400*2730
KD1814-SY2	1800*1200	850KG	2230*2420*2730
KD1816-SY2	1800*1400	900KG	2230*2420*2730
KD2016-SY2	2000*1400	950KG	2230*2620*2730
LASER POWER: 80W、100W、130W、150W LASER HEAD: DOUBLE/FOUR/SIX HEADS			
NON-STANDARD CUSTOMIZATION IS ACCEPTABLE (UNIT: MM)			

APPLICATION



Comparing with ordinary single head vision laser cutting machine , the cutting efficiency improved by 80% and more



Comparing with ordinary single head laser cutter , splicing cutting can be realized , the cutting efficiency improved by 80% and more

APPLICATIONS:

DIGITAL PRINTING / LACES / EMBROIDERY / CURTAINS / TENNIS / SHOES / CLOTHING / LUGGAGE AND BAG / CAR SEAT / SOFA / CUSHION

KASU VISION LASER CUTTING MACHINE WITH SAFE COVER



Bigger Cutting Area,
Same Cutting Precision



Doubled Cutting Efficiency,
Higher Productivity



Both Vision and Non-Vision
Working Modes



Stable and
24 Hours Running



Super Simple
to Operate

PARAMETERS

MODEL	DETECTING AREA(MM)	NET WEIGHT	DIMENSION(MM)
KD1814-S1	1800*1400	900KG	2230*2430*1940
KD1814-SY	1800*1200	950KG	2230*2430*1940
KD1816-S1	1800*1600	950KG	2230*2430*2130
KD1816-SY	1800*1400	1000KG	2230*2430*2130
LASER POWER: 80W、100W、130W、150W LASER HEAD: SINGLE/DOUBLE HEADS			
NON-STANDARD CUSTOMIZATION IS ACCEPTABLE (UNIT: MM)			

SUCCESSFUL STORIES



KASU LARGE VISION LASER CUTTER



LESS THAN 3 MONTHS' ROI!

SAVING \$215 PER DAY
US\$ 215

SAVING \$ 61540 PER YEAR!!
US\$61540

SAMPLE:

Who: A sportswear factory **Time Duration:** One day **Production Capacity:** 1,000 clothing, average 4,000 pieces
Material Usage: 800 meters **Working Time:** 10 hours **Salary:** US\$23.00/person/day

SAVING MANPOWER UP TO US\$140

Comparison Item	Firstly Cut Then Print	Firstly Print Then Manual Cut	Firstly Print Then Laser Cut
Material	7 Workers	9 Workers	3 Workers
Salary	US\$165.00	US\$210.00	US\$70.00

SAVING MATERIAL UP TO US\$125

Comparison Item	Firstly Cut Then Print	Firstly Print Then Manual Cut	Firstly Print Then Laser Cut
Material Wastage Rate	5%	1%	1%
Re-production Material Cost	US\$155.00	US\$30.00	US\$30.00

REMARKS

DATA 1: Laser Cutting Capacity: 50 Clothing/H; Manual Cutting Capacity: 13 Clothing/H.
 DATA 2: 300 working days;
 DATA 3: Material Cost US\$3.00/Meter, Printing Cost US\$0.80/Meter.

PARAMETERS

- LASER HEAD: SINGLE/DOUBLE
- LASER GENERATOR : CO2 LASER TUBE
- COOLING SYSTEM: AC CHILLER
- CUTTING DEEPNESS: ≤10MM
- POWER SUPPLY: AC220V ±5%/50HZ
- GROSS POWER: 2000W
- Graphic Format: PLT、DXF、etc.。
- CUTTING SPEED: ≤900MM/S

MODEL	DETECTING AREA(MM)	NET WEIGHT	DIMENSION(MM)
KD1614-S	1600*1400	750KG	2230*2400*2730
KD1814-S	1800*1400	800KG	2420*2230*2730
KD1816-S	1800*1600	850KG	2420*2230*2730
KD2016-S	2000*1600	900KG	2620*2230*2730

LASER POWER: 80W、100W、130W、150W
 NON-STANDARD CUSTOMIZATION IS ACCEPTABLE (UNIT: MM)

THOUSANDS OF FACTORIES HAVE CHOSEN KASU, SO WHAT ARE YOU WAITING FOR?



1 CUTTER = 5 WORKERS TRADITIONAL CUTTING METHOD

TRADITIONAL PRINTING METHOD



TRADITIONAL CUTTING METHOD



AFTER APPLYING KASU LASER



1 FEEDING FABRIC → **2 TAKING PICTURE & RECOGNIZING CUTTING LINE** → **3 CUTTING** → **4 SORTING PIECES OUT**

TIPS 2MM WIDE BLACK CUTTING LINE PRINTED & 3MM DISTANCE BETWEEN PIECES

PRODUCT ADVANTAGES

- Automatically recognize the distorted outline;
- Intelligently handling distorted image;
- Super High recognition precision ≤ 1mm
- One-time shot of 1.8M*1.38M range;
- Smooth cutting edge, enhanced product quality;
- Friendly interface, aged operator can handle

KASU HIGH PRECISION LASER CUTTER

KASU PRECISION LASER CUTTER adopts industry-leading and high-precision visual recognition algorithm and ultra-fine laser cutting technology to deal with the deformation of flexible materials such as fabric and leather in the printing or embroidery process with higher cutting accuracy and smoother curves. It automatically corrects the deformation problem during the printing and embroidery process, and automatically cuts along the edge with high precision, and the cutting error is less than 0.5mm.

PRODUCT ADVANTAGES



High-precision cutting greatly minimizes material waste



Full-format recognition of complex graphics for continuous cutting



Full-automatic operation helps save labor cost



MODEL	DETECTING AREA(MM)	NET WEIGHT	DIMENSION(MM)
KD1080-F	1000*800	430KG	1610*1390*2250
KD1390-F	1300*900	480KG	1920*1480*2250
KD1610-F	1600*1000	530KG	2210*1610*2730
KD1810-F	1800*1000	550KG	2420*1610*2730
LASER POWER: 80W、100W、130W、150W			
NON-STANDARD CUSTOMIZATION IS ACCEPTABLE (UNIT: MM)			

APPLICATION



KASU LASER CUTTER WITH PROJECTOR

POSITIONING, CUTTING, DRILLING IN ONE CUTTER



NO MODES NEEDED



HIGH CUTTING ACCURACY



SMOOTH CUTTING EDGE



POSITION & BLIND CUT

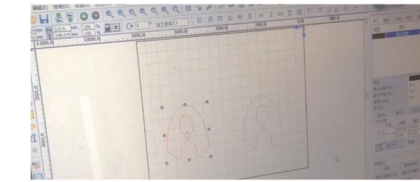


EASY TO OPERATE

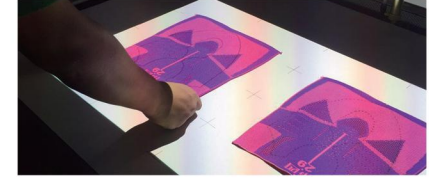
PROCEDURE



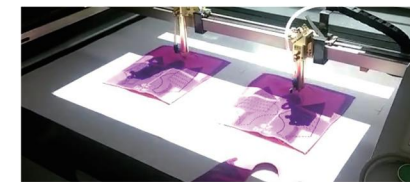
1 PARAMETER SETTING FOR PROJECTOR OF 1:1



2 GENERATING CUTTING PATTERN DATA



3 PUTTING PIECES ON THE PLATFORM



4 CUTTING & DRILLING



5 SORTING PIECES OUT

PARAMETERS

- LASER HEAD: SINGLE DOUBLE FOUR HEADS
- LASER TYPE: GLASS TUBE CO2
- LASER POWER: 80W 100W 130W 150W
- COOLING SYSTEM: CONDITIONER
- CUTTING DEEPNESS: ≤10MM
- CUTTING SPEED: ≤600MM/S
- CUTTING PLATFORM: HONEYCOMB
- POWER SUPPLY: AC220V ±5%/50HZ
- GROSS POWER: <2500W
- Graphic Format: PLT、DXF、etc..

MODEL	DETECTING AREA	NET WEIGHT	DIMENSION
KT1080-F	1000*800	300KG	1600*1450*1750 (100W)
			1900*1450*1750 (130W)
KT1610-F	1600*1000	400KG	2210*1590*2500

UNIT: MM

KASU LASER CUTTER WITH CONVEYOR



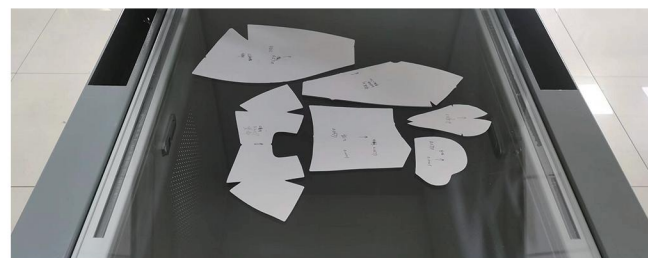
KASU laser cutter series adopts a thermal processing method without contact, which is suitable for all kinds of fabric. There won't be any burnt fringe along the incision and no mold is needed, hence very suitable for manufacturing products with small amount, various designs and with a high cutting-quality demand. Cooperating with KASU Automatic Composing Layout And Material Calculating Software, which was researched and

developed independently by KASU team, KASU Laser Cutter has achieved full-automatic operation.

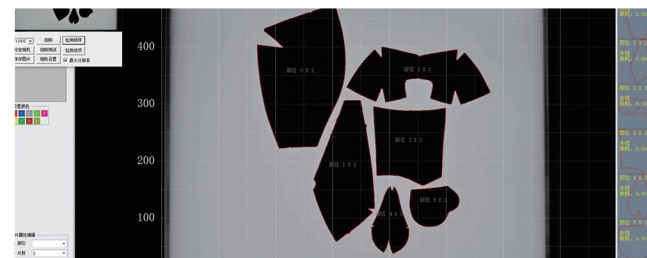
TRADITIONAL CUTTING METHODS



SAY NO! SAY NO TO LOW EFFICIENCY, LOW QUALITY & HIGH COST.



1 PUT PAPER PATTERNS ON BOARD



2 GENERATING CUTTING OUTLINE



4 SORTING PIECES OUT

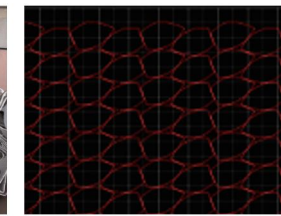


3 LASER CUTTING

PRODUCT ADVANTAGES



PUNCHING MACHINE



LASER CUTTER

5MM PATTERN DISTANCE VS 0MM PATTERN DISTANCE



SAVING AT LEAST

5% MATERIAL COST



PUNCHING MACHINE



LASER CUTTER

MOULDS NEEDED VS NO MOULD



SAVING AT LEAST

100~900 RMB
MOULD COST FOR JUST ONE ORDER!



SCISSOR CUT



LASER CUTTER

TRIMMINGS LEFT VS CLEAN CUTTING EDGE



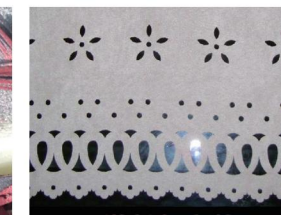
ENHANCING PRODUCT

QUALITY

BETTER WORKING ENVIRONMENT



PUNCHING MACHINE



LASER CUTTER

SIMPLE SHAPES VS ALL KINDS OF ELABORATED SHAPES



ENHANCING PRODUCT

ADDED VALUE

PARAMETERS

- LASER HEAD: SINGLE DOUBLE FOUR HEADS
- LASER TYPE: CO2 LASER SEALED IN GLASS TUBE
- LASER POWER: 80W 100W 130W 150W
- COOLING SYSTEM: CONDITIONER
- CUTTING DEEPNESS: ≤10MM
- CUTTING SPEED: ≤900MM/S
- POWER SUPPLY: AC220V ±5%/50HZ
- GROSS POWER: 2000W
- Graphic Format: PLT、DXF、etc.。
- REPEATED POSITIONING ACCURACY: ±0.1MM

MODEL	DETECTING AREA	NET WEIGHT	DIMENSION
K1614-S	1600*1400	700KG	2230*2400*1130
K1814-S	1800*1400	750KG	2420*2230*1130
K1816-S	1800*1600	800KG	2420*2230*1310
K2016-S	2000*1600	850KG	2620*2230*1320

NON-STANDARD CUSTOMIZATION IS ACCEPTABLE (UNIT: MM)

KASU SMALL VISION LASER CUTTER



Through different kinds of recognition method, such as featured point to locate cutting, automatic obtaining outline cutting, Mark point location and adopting professional CCD lens, KASU Small Vision Laser Cutter has high recognition speed and high cutting rate, which is very suitable for continuous cutting large amount of computer embroidery, marking and labels of plush toy. And

ADVANTAGES

- 1** Multi-angle recognition cutting for a variety of graphics
- 2** High positioning and cutting accuracy on mini-size products
- 3** Stitching and cutting large graphics beyond camera's view
- 4** Camera recognition speed: 20% higher than industry average

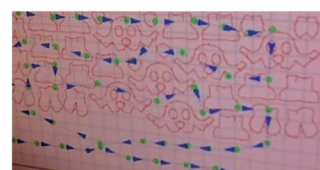
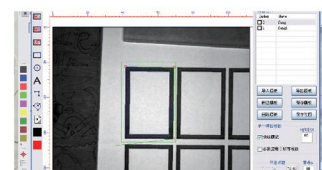
PARAMETERS

- LASER HEAD: SINGLE/DOUBLE HEADS
- CUTTING SPEED: ≤600MM/S
- LASER TYPE: CO2 LASER SEALED IN GLASS TUBE
- WORKING TABLE: HONEYCOMB
- LASER POWER: 80W/100W/130W/150W
- POWER SUPPLY: AC220V+5%/50HZ
- COOLING SYSTEM: AC CHILLER
- GROSS POWER: 2000W
- CUTTING DEEPNESS: ≤10MM
- GRAPHIC FORMAT: PLT/DXF/etc.

MODEL	DETECTING AREA	NET WEIGHT	DIMENSION
KX1080-F	1000*800	380KG	1610*1390*1130
KX1390-F	1300*900	430KG	1920*1480*1130
KX1610-F	1600*1000	480KG	2210*1610*1130
KX1810-F	1800*1000	500KG	2420*1610*1130

NON-STANDARD CUSTOMIZATION IS ACCEPTABLE (UNIT: MM)

PROCEDURE



- 1** MAKING MODES
- 2** SCANNING THE FABRIC
- 3** GENERATING CUTTING LINE
- 4** CUTTING

KASU LASER ENGRAVING & CUTTING MACHINE

KASU laser engraving and cutting machine is a professional laser machine specially developed for the advertising craft gift industry. It has the functions of cutting and engraving and has excellent performance in cutting and engraving wood, bamboo, acrylic, PVC, leather, paper, rubber and other non-metal board materials.



ADVANTAGES



SHORTEST CUTTING PATH



FAST CURVILINEAR CUTTING



AUTOMATIC OPTICAL
COMPENSATION



STABLE STRUCTURE DESIGN

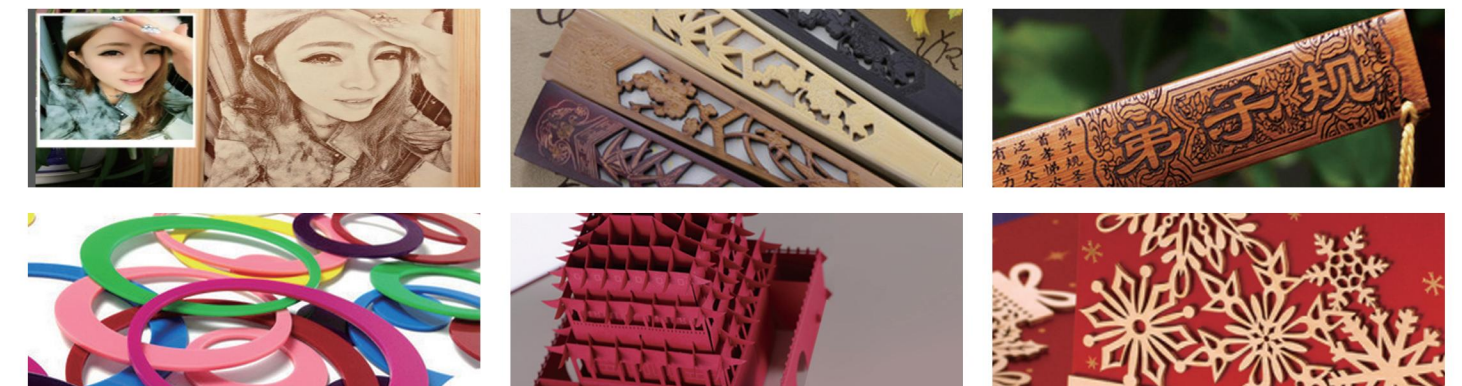
PARAMETERS

- LASER HEAD: SINGLE/DOUBLE/FOUR/SIX HEADS
- WORKING TABLE: HONEYCOMB/KNIFE BLADE
- LASER TYPE: CO2 LASER SEALED IN GLASS TUBE
- POWER SUPPLY: AC220V+5%/50HZ
- LASER POWER: 80W/100W/130W/150W
- GROSS POWER: 2000W
- COOLING SYSTEM: AC CHILLER
- GRAPHIC FORMAT: PLT/DXF/etc.
- CUTTING DEEPNESS: ≤10MM
- REPEATED POSITIONING ACCURACY: ±0.1MM
- CUTTING SPEED: ≤600MM/S

MODEL	DETECTING AREA	NET WEIGHT	DIMENSION
K960-F	900*600	350KG	1400*1200*1130
K1080-F	1000*800	380KG	1610*1390*1130
K1390-F	1300*900	430KG	1920*1480*1130
K1610-F	1600*1000	480KG	2210*1610*1130
K1810-F	1800*1000	500KG	2420*1610*1130

NON-STANDARD CUSTOMIZATION IS ACCEPTABLE (UNIT: MM)

APPLICATION



KASU FLATBED LASER CUTTER WITH CONVEYOR

In order to meet the demand of high-speed and high-precision processing of large-size cutting pieces, the machine adopts the steel frame structure with high-temperature quenching and plastic spraying anti-rust treatment, and the high-quality servo motion control system to ensure the accuracy and stability of long-term production and processing. The whole machine adopts oxidation blackened chain belt automatic feeding platform, which effectively solves the problem of traditional belt easily run off and warp deformation. The machine is easy and convenient to operate, especially suitable for cutting large size webs. The machine is widely used in garment, auto interior, home textile, sofa fabric, outdoor products, advertising banner and other industries with large-size cutting needs.



KEY ADVANTAGES



MORE EFFICIENT



MORE MATERIAL-SAVING



FEWER INPUTS



SMALLER FLOOR SPACE



3 TIMES MORE EFFICIENT THAN TRADITIONAL CUTTING MACHINES



OPTIONAL DEVICE



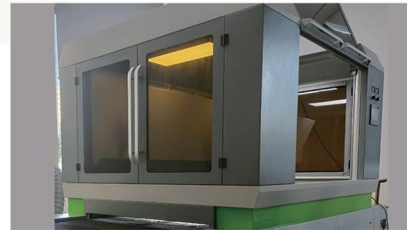
FOUR HEADS ASYNCHRONOUS



FRONT RECEIVING TABLE



AUTOMATIC ACTIVE FEEDER



FULLY ENCLOSED PROTECTIVE COVER

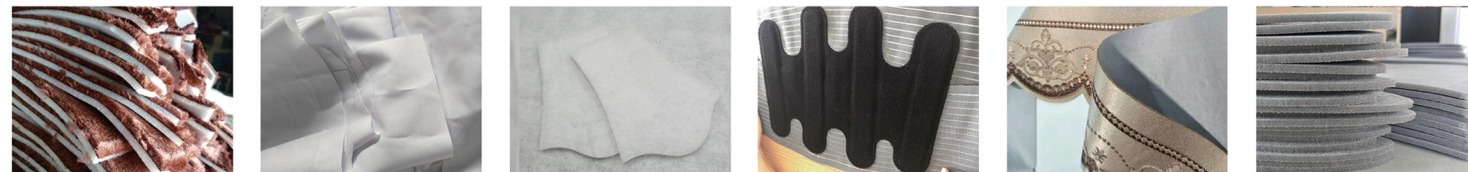


GREAT VISION

PARAMETERS

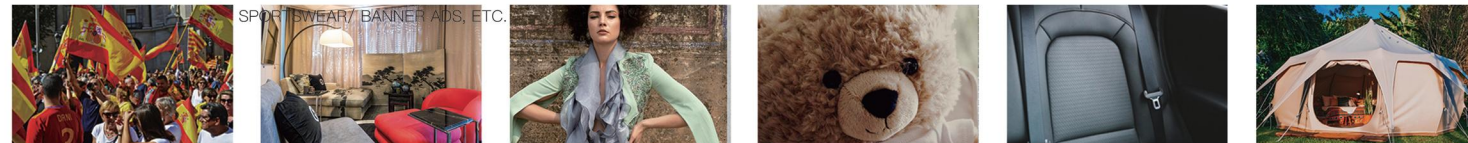
MODEL	DETECTING AREA	NET WEIGHT	DIMENSION
K1820-SY	1800*2000	930KG	2420*2900*1500
K1822-SY	1800*2200	980KG	2420*3100*1500
K2024-SY	2000*2400	1130KG	2620*3300*1500
K2030-SY	2000*3000	1280KG	2620*3900*1500
LASER POWER: 80W、100W、130W、150W LASER HEAD: DOUBLE/FOUR/SIX HEADS			
NON-STANDARD CUSTOMIZATION IS ACCEPTABLE (UNIT: MM)			

SAMPLES

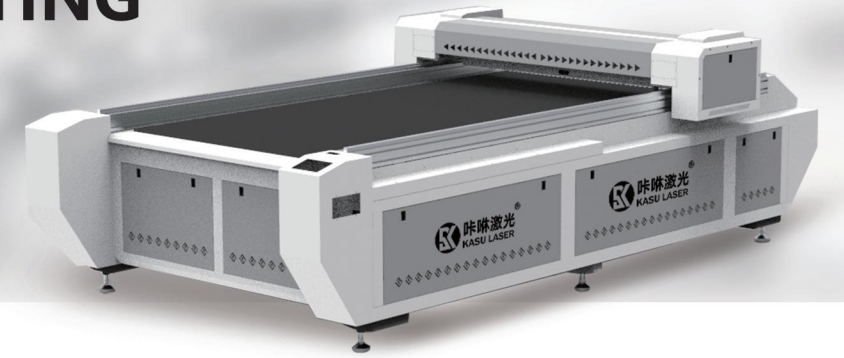


APPLICATION

CUSTOMIZED APPAREL/ HOME TEXTILE/ HOME FURNITURE/ CARPET&MATS/ WALL DECORATION/ CAR INTERIORS/ OUTDOOR PRODUCTS/ SPORTSWEAR/ BANNER ADS, ETC.



KASU LASER CUTTING MACHINE

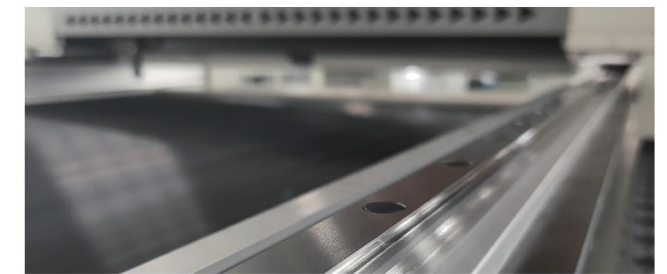


PARAMETERS

MODEL	DETECTING AREA	NET WEIGHT	DIMENSION
K1325-F	1300*2500	650KG	1850*3500*1130
K1825-S	1800*2500	1000KG	2420*3480*1140
LASER TYPE: 80W、100W、130W、150W、180W、300W			
NON-STANDARD CUSTOMIZATION IS ACCEPTABLE (UNIT: MM)			



1. High temperature quenching steel frame structure — gantry precision milling processing, spraying plastic anti-rust treatment and deformation-resistant



2. High precision linear guide rail — high speed and smooth operation without shaking, high accuracy and long life time

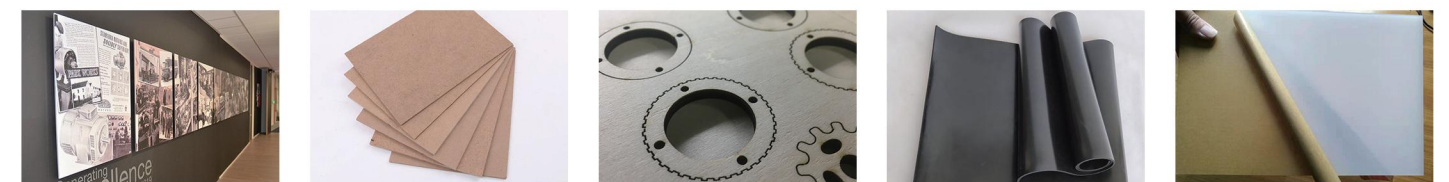


3. Rack and pinion drive — high speed and stable cutting of the whole sheet, integrating engraving and cutting in one set



4. Large-width knife strip platform — suitable for acrylic board, PVC board, wood board, composite board, density board and whole sheet cutting of other non-metallic material

APPLICABLE MATERIALS : Wood board, acrylic, rubber board, KT board, MDF board and other large format materials





NET WEIGHT: 125KG
SIZE: 1000MM*750MM*950MM



NET WEIGHT: 380KG
SIZE: 1610*1390*1130MM

KASU MATERIAL CALCULATING SOFTWARE

KASU LASER CUTTER K1080-F

MODERN SAMPLE ROOM SHOULD LOOK LIKE THIS!



KASU MATERIAL CALCULATING SOFTWARE

With the help of high precision industrial camera, and coordinated with an independent illuminant source system and image recognition algorithm with proprietary intellectual property. KASU Automatic Material Calculating software can automatically generate a smooth CAD graphic pattern with the size of 1:1 at a high speed. Together with the layout algorithm which was formed after years of optimized precipitation, files needed for laser cutters can be generated in a few minutes. Thus, the operators can be extricated from repetitive work, saving time and efforts.

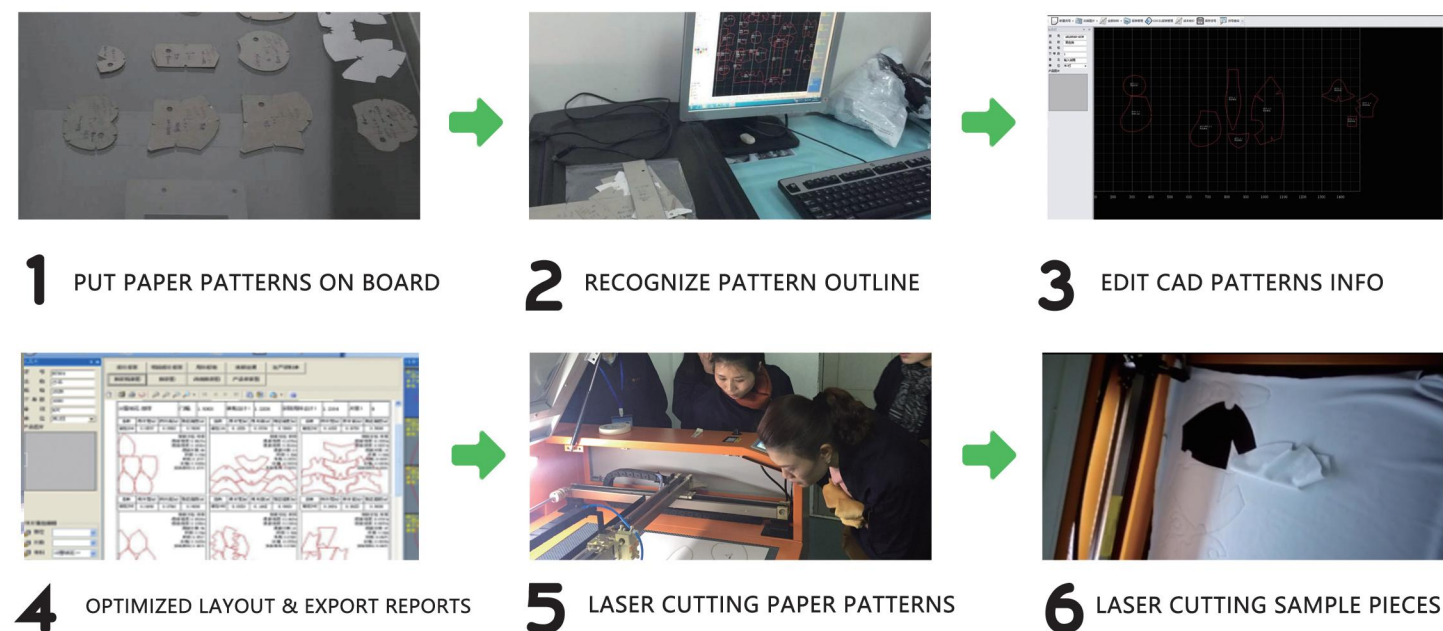
PREVIOUSLY, MAKING SAMPLES IS TIME & MANPOWER & MONEY CONSUMING!



WITH OUR HELP, YOUR DREAM CAN COME TRUE!

IS IT POSSIBLE THAT ONE WORKER CAN LEARN TO DO ALL THE ABOVE JOB IN ONE DAY?

PROCEDURE



FUNCTIONS

- Help offer accurate quotation in 10 mins
- 6 times more efficient in reproducing paper samples
- 6 times more efficient in sample fabric cutting
- Intelligent typesetting and scientific material saving
- Standardized layout and to reduce fabric inventory
- Realize centralized database management

TIPS

ONE WORKER CAN HANDLE MATERIAL CALCULATION, QUOTATION, PAPER PATTERN DUPLICATION AND SAMPLE PIECES CUTTING!

SAVING MATERIAL USAGE :

COMPARATION ITEM	MANUAL	SOFTWARE	RESULT	REMARKS
MATERIAL UTILIZATION RATE	ABOUT 85%	ABOUT 88%	SAVING 3%	
MATERIAL USAGE	ABOUT 200,000 METERS	ABOUT 194,000 METERS	SAVING 6,000 METERS	ANNUAL TURNOVER RMB 10,000,000
ANNUAL FABRIC COST	ABOUT RMB 3,000,000	ABOUT RMB 2,910,000	SAVING RMB 90000 /YEAR	RMB 15/METER

SAVING MANPOWER :

COMPARATION ITEM	MANUAL	SOFTWARE	RESULT	REMARKS
MATERIAL CALCULATION & QUOTATION	ONE HOUR	15 MIN	400% WORKING EFFICIENCY ENHANCED	20-30 PATTERNS/ORDER
PAPER PATTERN DUPLICATION	30 MIN	5 MIN	600% WORKING EFFICIENCY ENHANCED	20-30 PATTERNS/ORDER
CUTTING SAMPLE FABRIC	30 MIN	5 MIN	600% WORKING EFFICIENCY ENHANCED	20-30 PATTERNS/ORDER
MANPOWER COST	THREE WORKERS	ONE WORKER	SAVING RMB 72000 /YEAR	SALARY : RMB 3,000/MONTH

KASU HOT IRON CUTTER -KSDT1812

10 PLUS YEARS'
PRACTICE MAKE PERFECTION!

KASU Automatic Hot Iron Cutter replaces the traditional manual hot melt cutting method in cutting plush and composite sponge plush materials, and especially fit to manufacture toys with large amount (more than a thousand plush toys), complex ranging method or large size.



How does hot-iron cutting work as a kind of cutting process?
Only friends who deal with plush products should be clear.

THE MOST EFFICIENT AND LOWEST COST CUTTING METHOD FOR BIG AMOUNT ORDER OF PLUSH TOYS!

MAKING HOT IRON BOARD



TRADITIONAL MANUAL CUTTING



PROBLEMS YOU ARE FACING---NO WORKERS!

- 1 EVERYDAY holding several kilos board for 10 hours!
- 2 EVERYDAY standing for 10 hours!
- 3 EVERYDAY coordinating eyes & hands for 10 hours!
- 4 EVERYDAY breathing poisonous smoke!
- 5 BEARING working environment over 40°C in summer and minus tem. with fans blowing!
- 6

WOULD YOU WANT TO DO THE JOB? IF YES, WHAT ABOUT SALARY?!

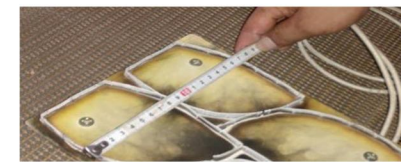


WHAT CAN YOU DO?
CHOOSE KASU TO ACHIEVE BOTH HIGH EFFICIENCY AND LOW COST!

2X ONE IRON CUTTER = TWO WORKERS

4X ONE IRON CUTTER = FOUR LASER CUTTERS

PROCEDURE



1 MEASURING PARAMETERS



2 FEEDING & CUTTING



3 SORTING PIECES OUT



TWO SECONDS FOR EACH BOARD!

Set your workers free from repeated actions for more creative work.

PARAMETERS

- MODEL: KSDT-1812
- WORKING AREA: 1800MM*1200MM
- MAIN DIMENSIONS: 2480MM x 1560MM x 1450MM
- FEEDING SYSTEM DIMENSIONS: 2430MM x 1680MM x 1020MM
- HOT IRON BOARD SIZE LIMITATION: ≤1200MM*1200MM
- CUTTING SPEED: 1600 pieces/h
- BOARD TEM.: 800°C
- NET WEIGHT: 650KG~750KG
- CORRECTION PRECISION: ± 10MM
- BOARD EXCHANGE SPEED: 3 Min.
- SMOKE REDUCTION RATE: 80%
- VOLTAGE: 220V
- STATIC POWER: 90W
- DYNAMIC POWER: 2000W

THEY ALREADY TOOK ACTION, NO MORE WAIT!



KASU UV LASER MARKING MACHINE

(DESKTOP TYPE)



Note: The appearance style is subject to the actual object.
The picture is for reference only.

KASU UV LASER MARKING MACHINE (DESKTOP TYPE)

KASU UV laser marking machine belongs to a series of products. The machine uses the third-order cavity frequency doubling technology compared with the infrared laser, UV 355 small focused spot, can greatly reduce the mechanical deformation of materials and processing small heat affected because mainly used for

ultra-fine marking, engraving, particularly suitable for food, pharmaceutical packaging material marking, porous, high-speed divided silicon and glass materials wafer cutting and other complex graphics applications.

EQUIPMENT MODEL	KMU-3	KMU-5	KMU-10	Q-SWITCHED FREQUENCY	8KHZ~15KHZ
LASER POWER	3W	5W	10W	SUPPLY VOLTAGE	AC/220V/50HZRT
LASER WAVELENGTH	355NM			OVERALL POWER	BASED ON LASER TYPE
REPEATABILITY ACCURACY	0.003MM			COOLING SYSTEM	BASED ON LASER POWER
MARKING RANGE	50*50MM / 100*100MM			INDICATOR LIGHT	INFRARED LASER
MARKING SPEED	<7000MM/S				



Good quality of beam, small focused spot and little effect of heat generated by processing help achieve ultra-fine marking



Stable performance, small size and low power consumption of the whole machine help reduce maintenance costs



Cold laser marking process with relatively low thermal effect help avoid workpiece damage and material scorching



Fast marking speed and high efficiency help achieve a wide application to a variety of materials

KASU UV LASER MARKING MACHINE

(FLYING TYPE)

Automation assembly line can be connected



EFFICIENT AND ENVIRONMENT-FRIENDLY

NO CONSUMABLE

KASU UV laser marking machine belongs to a series of products.

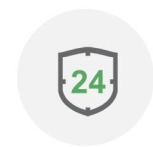
The machine uses the third-order cavity frequency doubling technology compared with the infrared laser, UV 355 small focused spot, can greatly

reduce the mechanical deformation of materials and processing small heat affected because mainly used for ultra-fine marking, engraving, particularly suitable for food, pharmaceutical packaging material marking, porous, high-speed divided silicon and glass materials wafer cutting and other complex graphics applications.

EQUIPMENT MODEL	KMU-3	KMU-5	KMU-10	MARKING SPEED	<7000MM/S
LASER POWER	3W	5W	10W	Q-SWITCHED FREQUENCY	8KHZ-15KHZ
LASER WAVELENGTH	355NM			SUPPLY VOLTAGE	AC/220V/50HZRT
REPEATABILITY ACCURACY	0.003MM			OVERALL POWER	BASED ON LASER TYPE
MARKING RANGE	50*50MM/100*100MM			COOLING SYSTEM	BASED ON LASER POWER
SIZE	WIDTH170MM / HEIGHT1200MM / BASE590MM*600MM				



One-time investment without any consumables



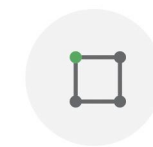
24-hour continuous operation



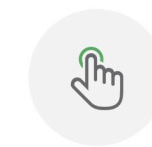
20000-hour long life time



Arbitrary design of coding information



Maximum coding range 110*110MM



Extremely easy to operate and no maintenance



GLASS CRAFTS



ELECTRONIC COMPONENTS



FOOD & BEVERAGE PACKAGING



MEDICINE PACKAGING

KASU FIBER LASER MARKING MACHINE



KASU fiber laser marking machine adopts Rayco's fully enclosed, maintenance-free and fixed laser optical system. The machine is equipped with ultra-high speed and high accuracy scanning oscillator, dual-axis digital oscillator conversion board and laser special USB control card, which brings good quality of spots, uniform optical power density, stable output optical power and powerful control system. Thus, it can be used for vector marking and bitmap marking, supporting up to 256 layers management and multi-level users permission management. It can meet requirements from

different industries on metal laser marking, plastic laser marking, food and beverage packaging marking and other marking applications. Now, it can be widely used in marking on food and beverage, medicine, tobacco, leather, packaging, building materials, lighting, trinkets, cosmetics, bearing marking, electronic components, etc.



MANTAINANCE FREE



HIGH QUALITY



LOW LOSS



NO POLUTION



HIGH ROI

PARAMETERS

- LASER MODULE POWER: 10W 20W 30W 50W
- WAVELENGTH: 1064nm
- MACHINE POWER: ≤650W
- WORKING AREA: 50mm x 50mm / 100mm x 100mm / 140mm x 140mm
- DIMENSIONS: 700mm x 900mm x 1380mm
- SPEED: 7000mm/s
- MIN. LINE WIDTH: 0.02mm
- MIN. CHARACTER: 0.15mm
- MARK DEPTH: ≤0.8mm
- REPEATED FREQUENCY: 20KHz ---100KHz
- REPEATED ACCURACY: ±0.002mm
- LASER MODULE LIFE: >50000H
- WEIGHT: 100 Kg
- VOLTAGE: 220VAC ±5%
- COOLING SYSTEM: BUILT-IN
- USAGE ENVIRONMENT: THE CLEANER, THE BETTER
- TEMPERATURE: 10° C to 35° C
- MOISTURE: 5% to 75%
- GRAPHIC FORMAT : BMP JPG TIF PLT DXF AI ETC.

SUITABLE MATERIALS

Metal Mark, Plastic Mark, Dark-Colour Material Mark, etc.

APPLICATIONS



KASU FIBER LASER MARKING MACHINE

KASU fiber laser marking machine adopts a fully enclosed, maintenance-free and fixed laser optical system. The machine is equipped with ultra-high speed and high accuracy scanning oscillator, dual-axis digital oscillator conversion board and laser special USB control card, which brings good quality of spots, uniform optical power density, stable output optical power and powerful control system. Thus, it can be used for vector marking and bitmap marking, supporting up to 256 layers management

and multi-level users permission management. It can meet requirements from different industries on marking.



MANTAINANCE FREE



STABLE PERFORMANCE



PORTABLE WITH SMALL FOOTPRINT



LONG LIFE SPAN

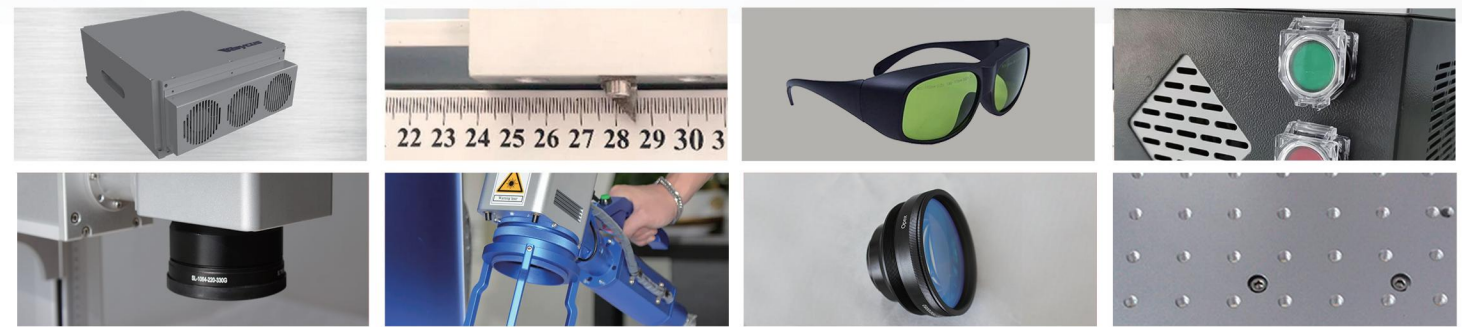
KMF-20H

KASU HANDHELD FIBER LASER MARKING MACHINE



KMF-20P

KASU DESKTOP FIBER LASER MARKING MACHINE



WORKING PARAMETERS

MODEL	HANHELD (KMF-20H)	DESKTOP (KMF-20P)		
LASER POWER	20W		MIN. CHARACTER	0.15MM
WAVE LENGTH	1064NM		MARKING DEPTH	≤0.8MM
MACHINE POWER	≤650W		REPEATED ACCURACY	±0.002MM
REPEATED FREQUENCY	20KHZ---100KHZ		LASER DURATION	>50000H
DIMENSION	550MMx300MMx800MM		WEIGHT	50KG 40KG
MARKING RANGE	100MM-200MM		VOLTAGE	220VAC±5%
MAX. MARKING SPEED	7000MM/S		COOLING SYSTEM	SUPPORTED TYPE
MIN. LINE WIDTH	0.02MM		SUPPORTED TYPE	BMP, JPG, TIF, PLT, DXF, AI, ETC.

APPLICATION MATERIALS

Metal and many kinds of non-metal materials, high hard alloy, oxide, electroplating, coating, ABS, epoxy resin, engineering plastics, etc.

INDUSTRY OF APPLICATION

Suitable for hardware products, tool accessories, precision instruments, single glue keys, 1C chips, digital product parts, electronic components, cell phone communication parts, jewelry and ornaments, glasses and clocks, medical equipment, building materials, pipes and other high-precision product marking.



MARKING ON CRAFT GIFTS

DATE MARKING ON WINE BOXES

MARKING ON ABS PLASTIC SHELL

MARKING ON ORNAMENT

MARKING ON BEARINGS

MARKING ON USB FLASH DRIVE

KASU HANDHELD LASER WELDING MACHINE

Traditional welding processes such as tig welding/electric welding have problems such as slow welding speed, the high number of rework, many subsequent grinding and polishing procedures, high costs, many welding consumables, and high waste and loss. In addition, the traditional welding industry also suffers from widespread difficulties in recruiting welders and the aging of welders, which causes more problems for factory managers.

Laser welding uses high-energy laser pulses to locally heat the material in an area. The energy radiated by the laser, diffused through the heat conduction to the interior of the material, melts the material and forms a specific molten pool. Laser welding is a new type of welding method that can effectively meet the needs of the welding industry in the direction of welding thin stainless steel, iron, galvanized sheet, and other thin-walled materials, and can perfectly replace the traditional argon arc welding/electric welding processes.

KASU Handheld Laser Welding Machine is a laser processing solution professionally applied to the welding industry, using an integrated structural design and a new generation of fiber laser, configured with a handheld laser welding head, flexible and convenient to weld a wide range of metal materials at any angle and in a variety of modes. The welding seam is perfect and the strength is high, which fills the gap in handheld welding equipment in the laser equipment industry.

PRODUCT ADVANTAGES

- Super easy to operate
- Saving 2-4 professional welders
- Flat and beautiful weld seam
- High weld strength
- Small heat affected area and low deformation
- One machine for many metal types
- Supporting a wide range of welding methods
- Highly integrated rack design
- Multi-security design for greater safety
- Ultra-low operating costs and consumables
- Small in size with a 360° flexible movement
- Supporting automation equipments

CONFIGURATION



01 Industry-specific branded high-power laser source

Higher photoelectric conversion efficiency, better and more consistent beam quality.



04 Self-developed KASU laser welding control software

Higher photoelectric conversion efficiency, better and more consistent beam quality.



02 Handheld intelligent laser welding heads

Lightweight, ergonomic, dual water circulation design for good cooling and stability.



05 Intelligent control of all-in-one cabinets

Lightweight, ergonomic, dual water circulation design for good cooling and stability.



03 Industrial dual temperature and dual control chillers

The different cooling requirements of the laser and welding head are met at the same time, ensuring long and stable operation.



06 Wire feeder on board

The different cooling requirements of the laser and welding head are met at the same time, ensuring long and stable operation.



MULTI- SAFETY DESIGNS



Protective lenses

Longer life and effective protection of the focusing lens and QBH head



Welding head safety button

Higher security with anti-touch trigger settings



Wire-feed nozzle with anti-deflection design

Effective prevention of wire misalignment and guarantee of welding quality



Welding head holder

Well designed and easy to use



Multi-directional heat dissipation design

Attractive design and fast heat dissipation from all components



Protective goggles as standard

Hardened and reinforced lenses for more efficient and reliable protection

WORKING PARAMETERS

AVAILABLE MODELS	KHW-1000	KHW-1500	KHW-2000	WELD THICKNESS RECOMMENDATIONS	0.5-3MM		
LASER TYPE	FIBER LASER			WELDING SPEED	0-120MM/S		
LASER POWER	1000W	1500W	2000W	HOW IT WORKS	CONTINUOUS/PULSE WELDING		
LASER WAVELENGTH	1080±5NM			SUPPORT WELDING WIRE DIAMETER	Φ0.8-1.2	Φ0.8-1.6	Φ0.8-1.6
MODULATION FREQUENCY	1-5000HZ			PROTECTIVE GASES	10-15 L/MIN, ARGON, NITROGEN, COMPRESSED AIR (WITHOUT WATER)		
LASER POWER ADJUSTMENT RANGE	10-100%			INDUSTRIAL THERMOSTATIC DUAL CONTROL CHILLERS	1500W	1500W	2000W
OUTPUT POWER STABILITY	±1.5%			OPERATING TEMPERATURE	10-40°C		
FIBER LENGTH	10M STANDARD, 15M CAN BE CUSTOMIZED			HUMIDITY OF THE WORKING ENVIRONMENT	<70% NO CONDENSATION		
BEAM QUALITY	M2 < 1.2			PEAK POWER OF THE WHOLE MACHINE	5.5KW	7KW	8.5KW
COLLIMATED FOCAL LENGTH	2MM			POWER CONSUMPTION OF THE WHOLE MACHINE	≤3KW	≤4.5KW	≤6KW
FOCUSING LENGTH	1MM			POWER SUPPLY	220V/50/60HZ	220V/50/60HZ	220/380V/50/60HZ
SWING WIDTH	0-5MM ADJUSTABLE			MACHINE SIZE	900MM*600MM*1100MM		
ASSISTED POSITIONING SYSTEM	RED LIGHT			COMPLETE MACHINE WEIGHT	170KG	190KG	210KG
WELDING DEPTH (DEPENDING ON MATERIAL AND WELDING SPEED)	AROUND 2.5MM	AROUND 3.5MM	AROUND 4.5MM				

SUPPORT WELDING FORM

KASU handheld laser welding machine supports many welding forms such as: spot welding, internal and external fillet welding, circular arc welding, butt welding, lap welding, stack welding, riveting welding, rolled edge welding, T-welding, stacking welding, edge welding, etc.

APPLICATION INDUSTRIES



KASU handheld laser welding machine is widely used in the industries of electromechanical equipment, sheet metal, kitchen and bathroom, home appliances, aerospace, engineering construction, fencing, doors and windows, furniture, advertising, auto parts, sporting goods, handicrafts, woulds, etc.

APPLICATION MATERIALS

Mainly used for welding stainless steel, carbon steel, galvanized sheet, aluminum sheet, alloy steel, iron, aluminium alloy, copper, gold and silver, chrome, nickel, titanium and many other metal materials.

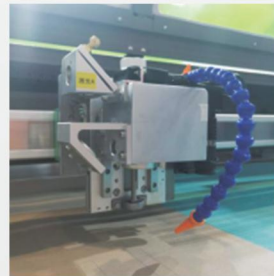
KC-1280

KASU CO2 GALVO GANTRY INTEGRATED LASER CUTTING MACHINE

The multi-functional CO2 high-speed mobile marking machine designed and developed by KASU combines the advantages of laser marking and X-Y mobile laser motion systems. The laser marking oscillator system provides high speed, high quality engraving of leather fabrics and half-cutting of hot stamping films, while the X-Y mobile design enables a wider range of materials to be processed and handled at a lower cost.



This new type of laser cutting adopts an industrial camera for stitching and calibration, a Japanese Fuji full same-service motor and precision ground linear guides, which are highly innovative and integrated. It enables large format stitching, cutting, engraving and hollowing work together with the advantages of fast processing speed, great effects, high accuracy and low cost.



Laser oscillator
GALVO system



Industrial
CCD camera



Imported full
servo motor



High precision
grinding linear guide

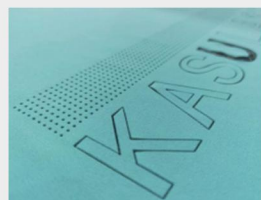


Touch control screen

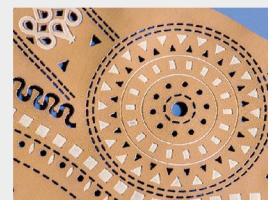
■ PARAMETERS

- LASER HEAD: SINGLE HEAD
- WORKING RANGE: 1200*800MM
- LASER TYPE: CO2 LASER SEALED IN GLASS TUBE
- LASER POWER: 100W
- WORKING TABLE: HONEYCOMB
- APERTURE: 8.5MM
- COOLING SYSTEM: AC CHILLER
- REPEATED ACCURACY: <2URAD
- MARKING SPEED: <2500MM/S
- POSITIONING SPEED: <15000MM/S
- CUTTING DEPTH: ≤5MM"
- SINGLE IMAGE MARKING RANGE: 50*50MM
- WORKING TEMPERATURE: -15°C~55°C
- POWER SUPPLY: AC220V±5%/50-60HZ
- GRAPHIC FORMAT: PLT/DXF/ETC.

■ SAMPLES



Breathable holes for
sportswear



Leather engraving
and hollowing



Stamping film
half-cut



Flannel burnishing



Craft paper
engraving

SHANGHAI KASU INTELLIGENT TECHNOLOGY CO., LTD.

SUZHOU KASU INTELLIGENT EQUIPMENT CO., LTD.